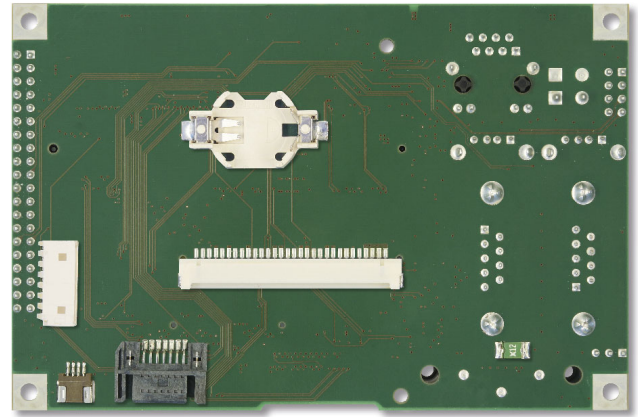
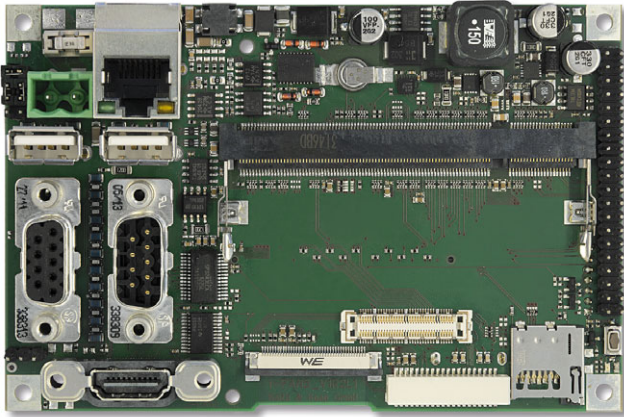


iP5-Base

Trizeps SODIMM-200 Baseboard

- Compact and scalable carrierboard with standard interfaces
- Supports HDMI V1.4, Dual LVDS or Touchscreen LCDs in different sizes
- 3-Axis 12-bit/8-bit digital accelerometer
- Peripherals: direct access via standard connectors and extension header
- CAN, RS485 und SATA II connector

Keith & Koep



Compatible computing units

Trizeps SODIMM-200 Modules Trizeps VII with i.MX 6 Quad, Dual, DualLite, Solo, SoloX (Trizeps IV-M, IV-WL, V, VI and MX28 on request)

Onboard

Display Interfaces LCD 18 Bit RGB, 5.0", 7.0" TFT-Display 800 x 480, 5.7" TFT-Display 640 x 480, Touch resistive and capacitive HDMI v1.4 WUXGA, Dual-LVDS WUXGA (4.3" on request)

Features USB2.0 Host, USB2.0 OTG, µSD Card Socket, RJ45 10/100 Mbit Ethernet, RS232 D-Sub 9, CAN RS485 D-Sub 9, Realtime Clock with Backup Cap or battery, LED, 3-Axis 12-bit/8-bit Digital Accelerometer, Reset, Audio LDO, Temp. Sensor, RGB Display, SATA II connector, FX11 high-speed board to board connector

Wireless Communication Trizeps VII option: Onboard WLAN and Bluetooth module, IEEE 802.11 a/b/g/n/e/i/h/d/k/r/w, +18 dBm, 72 Mbps (20 MHz) and up to 150 Mbps (40 MHz), Bluetooth 3.0+ EDR

Expandability

Extension Connector SL2-40 2.54mm Pin header

Extension interfaces SL2-40 Power, GPIOs (1x with PWM), SPDIF (Out and In), stereo Headphone (16R and 32R), Speaker (Mono, 8R), LineIn, Microphone, 2 x UARTs, 2x CAN, SDIO, I2C, 3 x ADCs

General Details

Operating Systems Microsoft Windows Embedded Compact 7, 2013 / Android JB 4.2.2 - 1.1.0 ASOP, Linux Ubuntu 14.04 LTS

Voltage Supply Industrial +12 up to +24V supply, low cost +5V direct supply (optional)

Operating Temperature -20°C to +85°C industrial

Board Dimensions 118.5 x 77.6 x 23.4 mm

Environmental Standard RoHS, REACH, WEEE

Availability 10 years form, fit, function*

Order code 38 102.TPC (for capacitive touch displays) / 38 102.TPR (for resistive touch displays)



*beginning product life circle Rev.0316
Technical modifications reserved, errors excepted

www.keith-koep.com

Keith & Koep GmbH
Uellendahler Str. 199
42109 Wuppertal
Tel +49 (202) 25253 0
Fax +49 (202) 25253 33